

# TROPHY**MARKER**

## User manual

- Place labels and ink ribbon
- Install driver
- Install DataPrint
- Activate DataPrint
- Selecting a label in DataPrint

## Place labels and ink ribbon

### Place ink ribbon



**A.** Open the transparent cover by pushing it down.



**E.** Install the black spindle including the waste roll on the front axle. First place it left and while pushing the spring, then place it right.

**Note:** The rim of the label spindle should be on the right.



**B.** Insert the first ink ribbon spindle (black) in the ink ribbon roll. Make sure the ink ribbon unwinds at the backside and the rim of the label spindle is on the right side (as shown in image).



**F.** Open the top of the printer using the green latches on both sides of the printer and lift it up. It will lock in an open position.



**C.** Install the black spindle including the ink ribbon on the rear axle. First place it left and while pushing the spring, place it right.

**Note:** The rim of the label spindle should be on the right.



**G.** Move the first part of the ink ribbon underneath the printhead and attach it to the cardboard waste roll (with adhesive tape for example).



**D.** Insert the the other black spindle into the cardboard waste roll.



**H.** Rotate the ink ribbon until the Altec packaging film is gone and the black part reaches the waste roll.



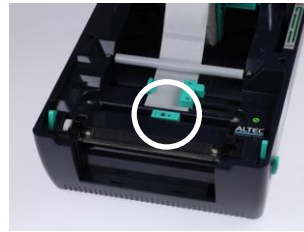
**Instruction video**  
Place ink ribbon

## Place labels



**I.** Place your roll of labels on the green label spindle and position it to the center using the green wings.

**Note:** If possible place the label roll on the thickening of the green wings.

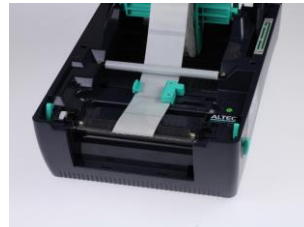


**M.** If your label roll has no notch or detection hole, the black mark sensor must be used (the green guide at the bottom of your label printer). Make sure the sensor eyes (black rectangle) are positioned directly under the nodige.

**Note:** You can move the black mark sensor from left to right.



**J.** Place the label spindle with the labels in the notches at the back of the label printer.



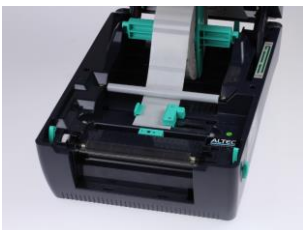
**N.** Feed the label roll until it reaches the metal edge at the front of the printer. Now close the printer by lifting it out of its lock and pushing it down gently until it clicks.



**K.** Pull the labels under the white bar and slide the green guides to the center using both hands. The guide in the right side is the 'Gap sensor'.



**O.** Close the transparent cover.



**L.** Make sure there is movement possible between the label roll and the guides. Zorg ervoor dat er geen speling meer is tussen de labels en de geleiders.

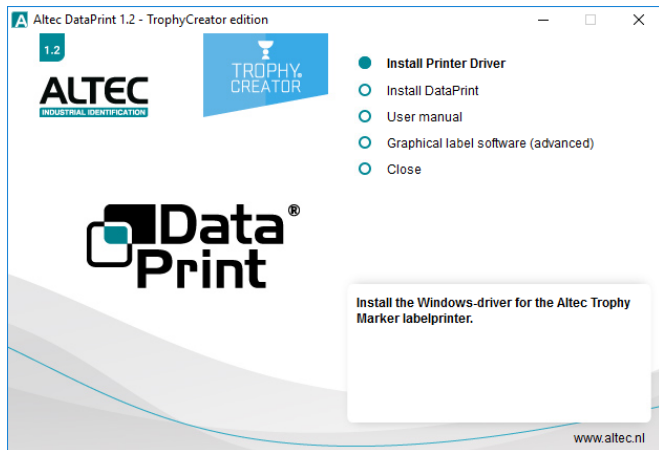
**Note:** Also make sure the guides are not placed too tight.



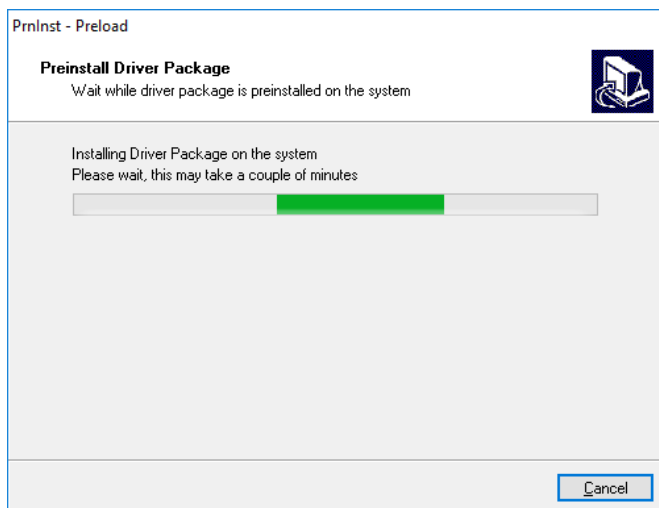
**Instruction video**  
Place labels

## Install driver

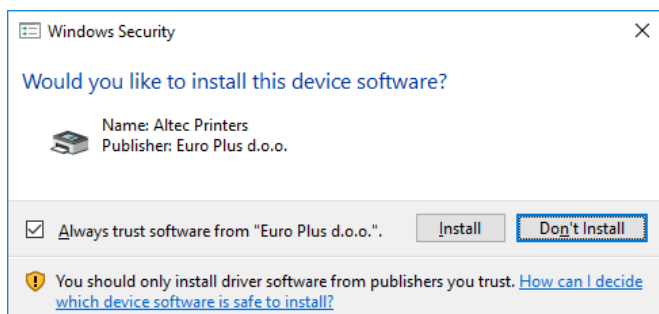
**Note:** please make sure the label printer is turned off.  
Turn on the labelprinter after the installation is complete.



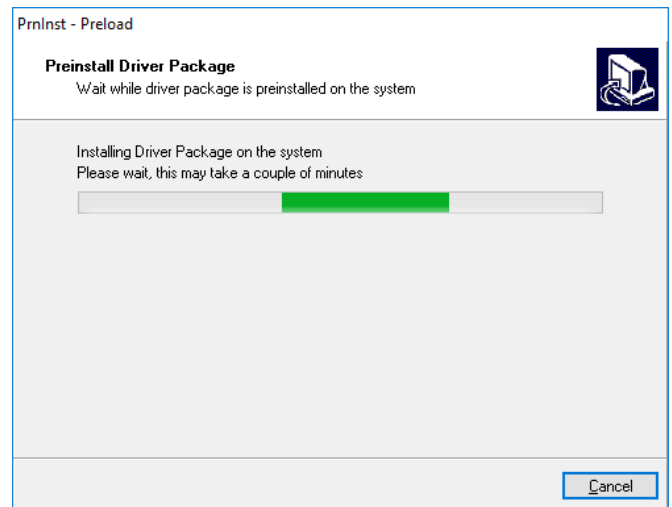
1. In the main menu, click 'Install Printer Driver'.



2. The installation will now be started.



3. During the installation, a Windows Security pop-up will appear.  
Click 'Install'

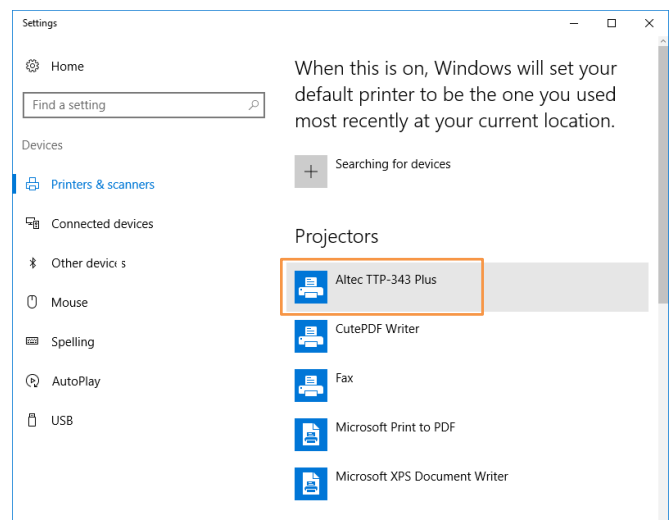


4. The installation will ben continued and completed.



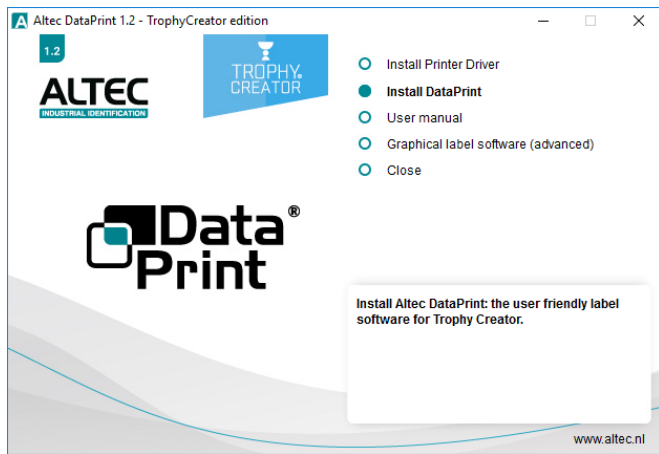
5. Now turn on the printer. The

Zet nu de printer aan. The PC will automatically detect your printer.  
An icon will appear in the taskbar. There is no need to do anything.  
This process will take 1 or 2 minutes to complete.

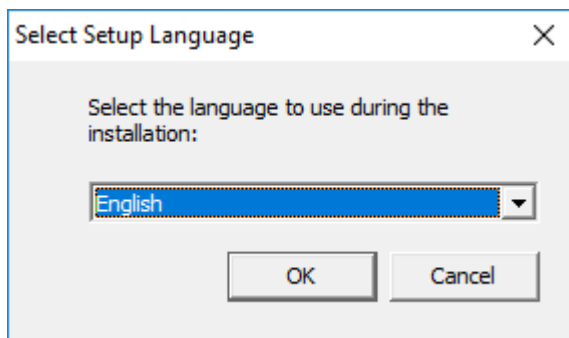


6. On the 'Devices' screen, the Altec TTP-343 Plus will be visible now.  
You can find this screen through Windows Control Panel.

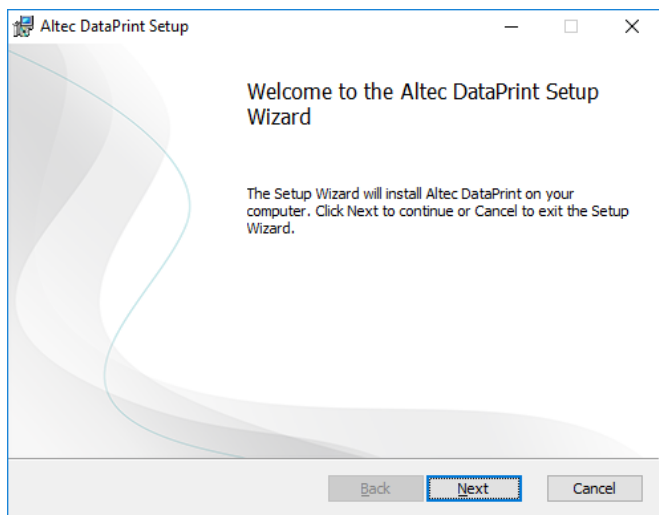
## Install DataPrint



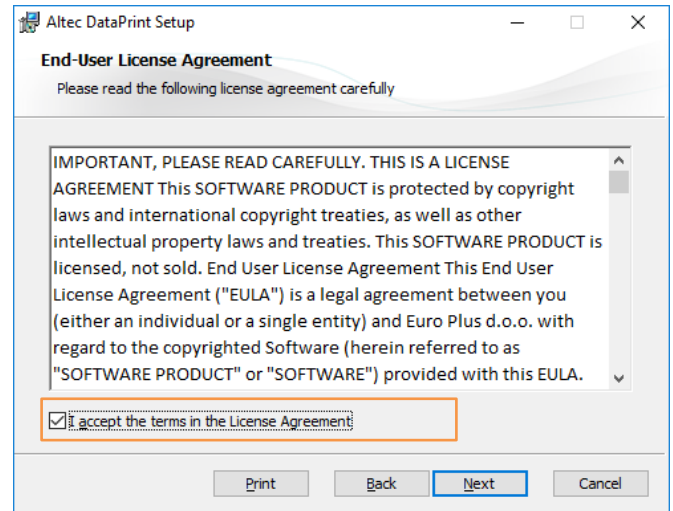
In the main menu, click 'Install DataPrint'.



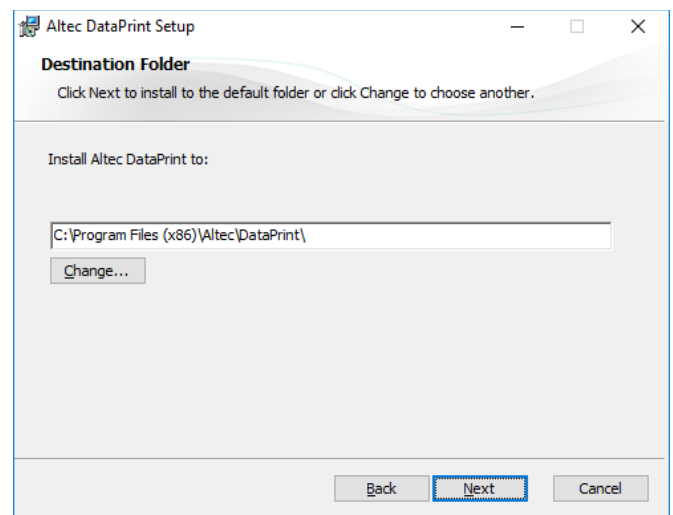
Select your language and click 'OK'.



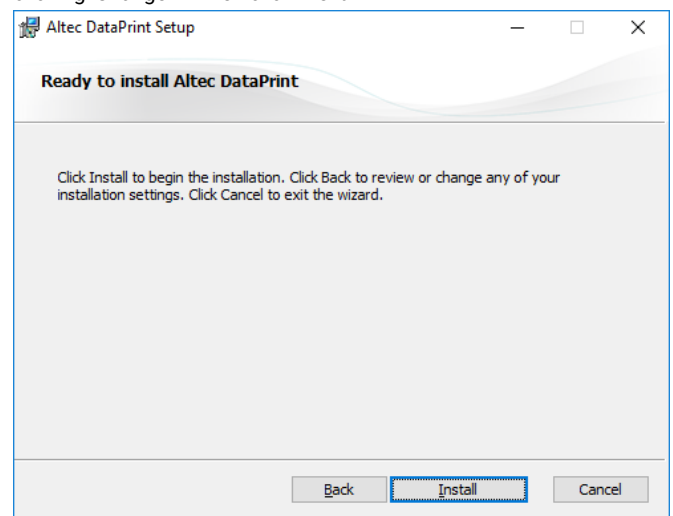
Click 'next'.



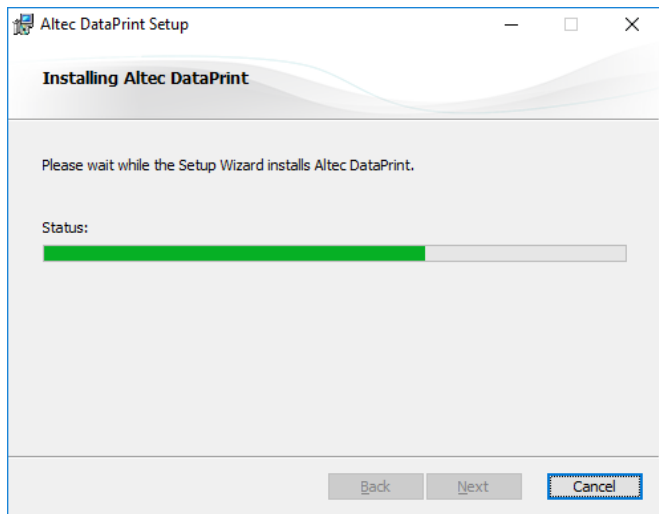
Read the License Agreement, check the box 'I accept the terms in the License Agreement' and click 'Next'.



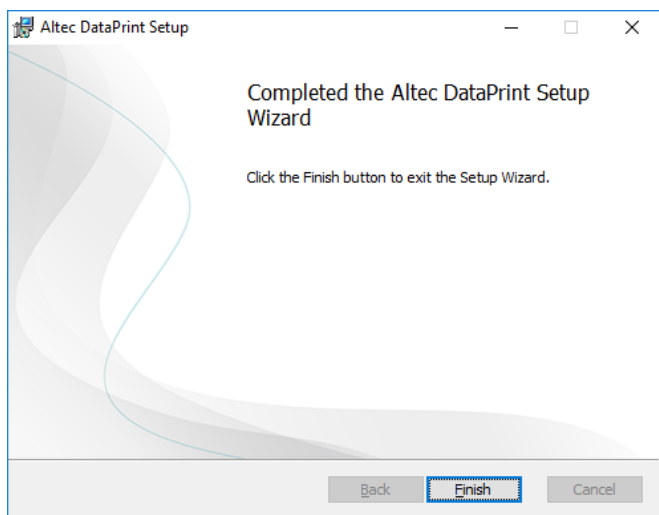
Keep the default installation folder or browse to a custom location by clicking 'Change...'. Then click 'Next'.



In the next screen, click 'Install' to start the installation of DataPrint.



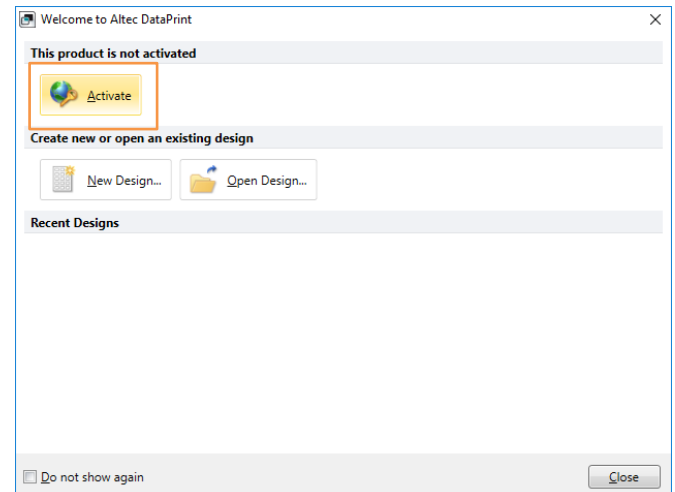
The installation will take a couple of minutes.



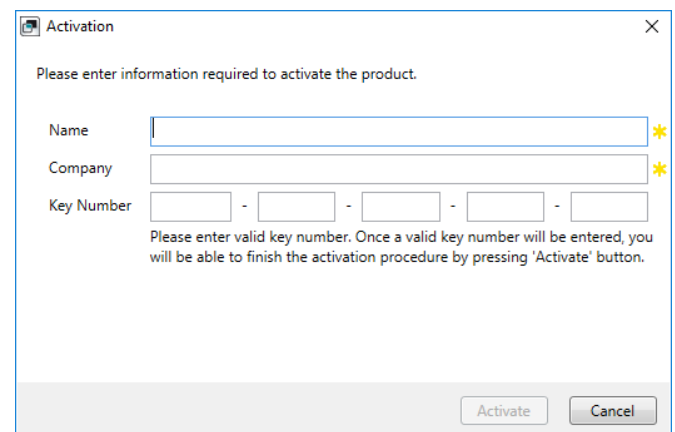
The installation is finished. Click 'Finished' to complete the installation.

## Activate DataPrint

You can activate DataPrint using the provided license code.

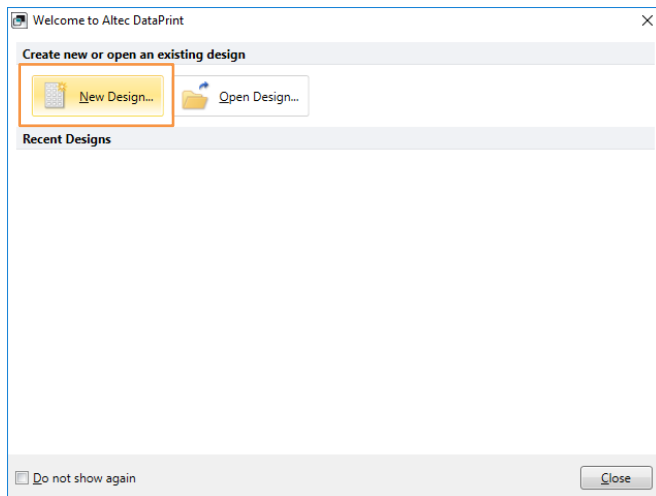


Launching DataPrint for the first time, the activate button will be visible on the first screen. Please click this button to activate the software.

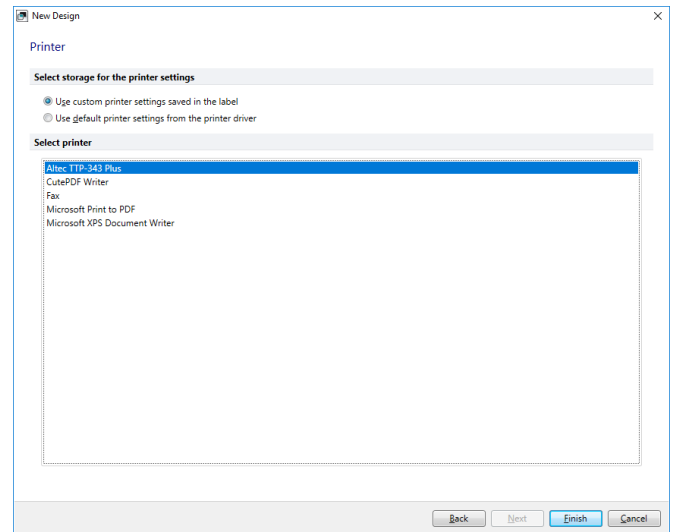


In the next screen, fill in your personal data and the license code. You can find the license code on the inside of the DVD cover. Activate DataPrint by clicking 'Activate'.

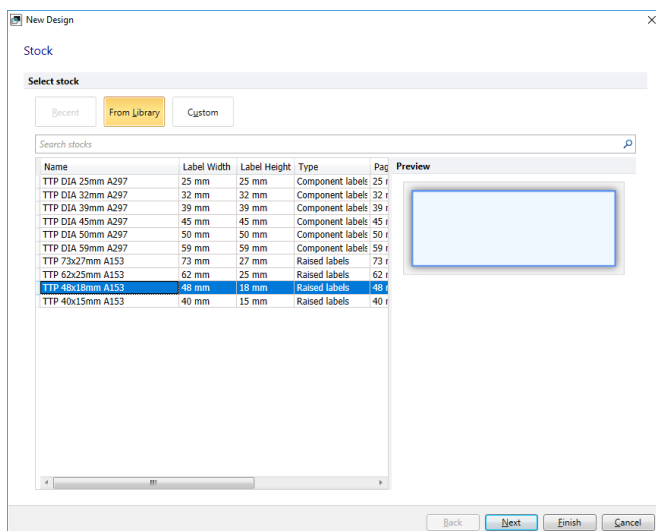
## Select a label in DataPrint



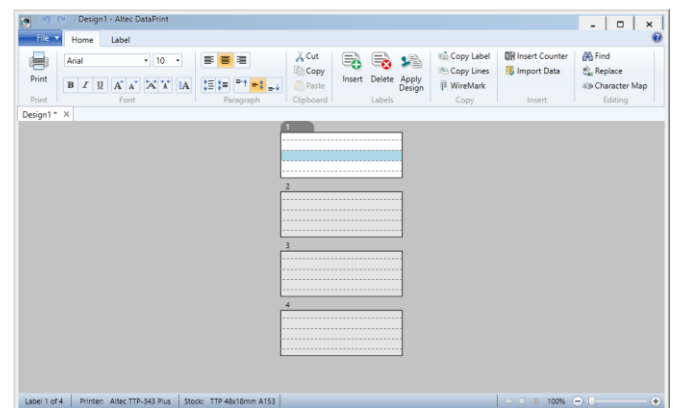
Launching DataPrint a screen will appear as shown above. Click 'New Design...'.



In this screen, select 'Altec TTP-343 Plus' and click 'Finish'.



Search for the right label in this list and click 'Next'.



Your label and printer are now set. You can start entering data and printing labels.



**Instruction video**  
Linking an Excel file